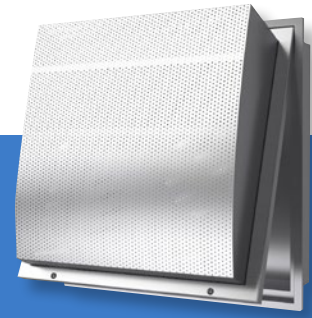




# HRDP-HEPA – Hinged Radial HEPA Diffuser



The HRDP is designed to provide low aspiration and high ventilation rates. The unique design of solid baffles in an intrusive perforated face can handle large volumes of air with low initial face velocities. The face of the diffuser is attached to the plenum with stainless steel hinges, and the opposite side is secured with 1/4-turn fasteners, allowing easy access to the interior for cleaning, sanitation and filter changes.

The HRDP-2 model introduces air in a semi-cylindrical 180° radial flow pattern, flushing a room with large volumes of clean conditioned air, minimizing mixing with contaminated air, while still allowing low room air velocities. The HRDP-1 model introduces air in a 90° radial flow pattern for perimeter applications.

## Applications

Hospital operating rooms, research laboratories, animal laboratories, food processing plants, pharmaceutical laboratories and protective environment rooms.

## STANDARD FEATURES

- Type 304 stainless steel construction
- #4 satin polished finish
- Unique, architecturally appealing curved design
- Solid internal baffles in a curved perforated face for radial air pattern; 90° pattern (1-way) or 180° pattern (2-way)
- 13% perforated face – 3/32" diameter holes on 60° 1/4" staggered centers
- Easily accessible interior for cleaning; hinged face secured by 1/4 turn fasteners
- Round duct inlets for simple duct connection
- Integral earthquake hanger tabs
- Compatibility with lay-in T-bar ceiling systems and surface-mount applications
- 2" HEPA (99.99% at 0.3 microns) or 2" ULPA (99.9995% at 0.12 microns) filter
- Filters include clear anodized extruded aluminum frame with test port for damper adjustment, filter pressure drop measurement or to perform leakage (scan) tests
- Filters packed independently from diffuser for final installation in the field

## OPTIONAL FEATURES

- Type 316 stainless steel construction
- Aluminum construction
- Antimicrobial epoxy powder coat finish options
- Butterfly or bowtie damper – available with remote cable
- PAO challenge system with two 1/2" pressure ports for static pressure and leak testing
- HEPA-Lert filter change needed indicator lamp
- Foil backed insulation (1.5" or 2.25")

