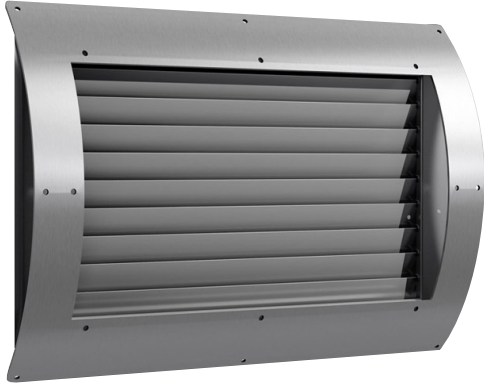


Spiral Duct Diffuser



The Spiral Duct Diffuser is used in large areas — factories, warehouses, workshops and gymnasiums — where grilles can be attached directly to the spiral duct which eliminates boots or special adapters for the installation of the grilles. Available with multiple design options:

150 Single Deflection Supply Grille in (H) horizontal or (V) vertical orientation where each blade is individually adjustable.

250 Double Deflection Supply Grille in (H) horizontal or (V) vertical orientation where each set of blades is individually adjustable.

SSPERF Return Grille is a 51% perforated face return grille.

For supply registers, specify Series S-44 Opposed Blade Damper (OBD) attached to any of the Spiral Duct Series. S-44 OBD assures even distribution of air across the grille face, as well as positive volume control.

STANDARD FEATURES

150/250 Spiral Duct

- Type 304 stainless steel construction
- #4 satin polished finish
- Air foil blades are individually adjustable
- 0.75" blade spacing
- Countersunk mounting screw holes

SSPERF Spiral Duct

- Type 304 stainless steel construction
- #4 satin polished finish
- 51% perforated face – 3/16" diameter holes on 60° 1/4" staggered centers
- Countersunk mounting screw holes

OPTIONAL FEATURES

150/250/SSPERF Spiral Duct

- Type 316 stainless steel construction
- Antimicrobial epoxy powder coat finish options
- S-44 opposed blade damper
- Air flow scoop to send supply air directly out the spiral duct