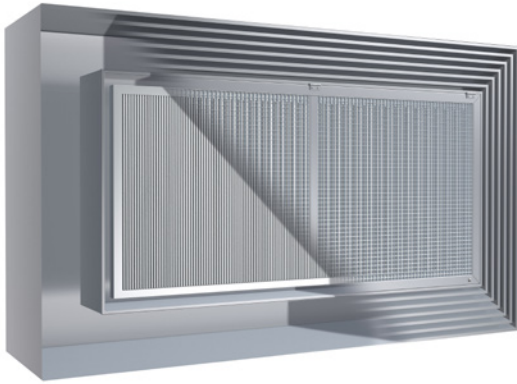
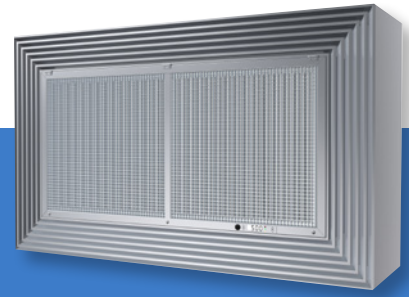


# SSCLR-FFU-HEPA – Recirculating Fan Filter Unit



This fan filter unit provides HEPA filtration with increased room air changes. Ideal for offices, classrooms and other commercial spaces, it draws air up through the center of the unit, removes airborne contaminants via a HEPA filter, and then discharges clean air into the room. It is quick and easy to install, with no impact on the existing HVAC system. The unit can be used virtually anywhere HEPA filtration is desired or required to reduce airborne particulate. A variety of construction options allow this versatile product to be configured for a multitude of retrofit applications.

## Applications

Classrooms, offices, patient rooms, care homes and any other room where HEPA-filtered air is needed.

## STANDARD FEATURES

- Type 304 stainless steel construction
- #4 satin polished finish
- 4-way throw pattern supply blades
- Hinged egg crate return grille with 1/4 turn fasteners
- Powerful, computer-controlled, variable speed EC motorized backward curved composite impeller with room-side access
- 2" HEPA (99.99% on 0.3 micrometers) or 2" ULPA (99.9995% on 0.12 micrometers) filter with room-side access
- Filters have clear anodized extruded aluminum frame with test port for damper adjustment, filter pressure drop measurement or to perform leakage (scan) tests
- Filters packed independently from diffuser for final installation in field
- Room-side digital CFM display and adjustment control offers instant visual verification, and can be set or adjusted in seconds
- Integral earthquake hanger tabs

## OPTIONAL FEATURES

- Type 316 stainless steel construction
- Aluminum construction
- Antimicrobial epoxy powdercoat finish options

