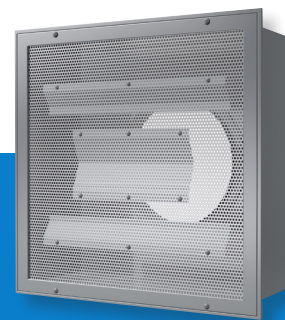


# FRD – Flat Radial Pattern Diffuser



The FRD Flat Radial Pattern Diffuser is designed to provide low aspiration at high ventilation rates. Specially designed internal baffles and a pressure plate produce an excellent radial air pattern that allows large volumes of air to be supplied at low level velocities. The unobtrusive flat face design provides the smooth appearance required for architectural excellence.

The FRD-2 model introduces air in a semi-cylindrical 180° radial flow pattern, flushing a room with large volumes of clean conditioned air, minimizing mixing with contaminated air, while still allowing low room air velocities. The FRD-1 model introduces air in a 90° radial flow pattern for perimeter applications.

## Applications

Hospital operating rooms, research laboratories, animal laboratories, food processing plants, pharmaceutical laboratories and protective environment rooms.

## STANDARD FEATURES

- Type 304 stainless steel construction
- #4 satin polished finish
- Unique, architecturally appealing flat face design
- Internal baffles and pressure plate for radial air pattern; 90° pattern (1-way) or 180° pattern (2-way)
- 51% perforated face – 3/16" diameter holes on 60° 1/4" staggered centers
- Easily removable face for cleaning; secured by 1/4 turn fasteners and safety cables to prevent accidental dropping
- Round duct inlets for simple duct connection
- Integral earthquake hanger tabs
- Compatibility with lay-in t-bar ceiling systems and surface-mount application

## OPTIONAL FEATURES

- Type 316 stainless steel construction
- Aluminum construction
- Antimicrobial epoxy powdercoat finish options
- Damper options: butterfly or bowtie damper – both available with remote cable (as an option)
- Foil backed insulation with (2) available sizes: 1.5" or 2.2"
- FRD drop face

