

# SSLFHFD

## LAMINAR FLOW HEPA FILTER DIFFUSER

### STANDARD CONSTRUCTION

- 304 Stainless Steel w/Filter Gel Seal Knife Edge
- 70mm Gel Seal H14 HEPA Filter - 99.995% on 0.3 µm, Room Side Replaceable
- All-Welded Plenum Seams
- Lay-In / Surface Mounting
- Walkable Plenum up to 250lbs
- Hanger Tabs for Unit Support Above Ceiling

### FEATURE OPTIONS

- ☐ Foil Backed Insulation
  - ☐ 1.5" (R=4.2)
  - ☐ 2.25" (R=6.0)
- ☐ HEPA-Lert Filter Monitor
  - ☐ Battery
  - ☐ 24V Supply *(By Others)*
- ☐ Test Ports
  - ☐ 1 Port
  - ☐ 2 Ports
- ☐ PAO Challenge System *(Requires 2 Test Ports)*
- ☐ Diffuser Basket
- ☐ Dual Perf *(2nd Panel/Layer of Perf)*
- ☐ Hinged Face Frame
- ☐ Fully Welded
- ☐ Hard Ceiling Clamping System
- ☐ Hanger Brackets *(for use with 3/8" threaded rod by others)*
- ☐ Custom Unit Depth:\_\_\_\_\_

### INLET OPTIONS

- ☐ Inlet Location
  - ☐ Top Inlet
  - ☐ Side Inlet
  - ☐ End Inlet
- ☐ Inlet Shape/Size
  - ☐ Round - Size:\_\_\_\_\_
  - ☐ Oval - Size:\_\_\_\_\_
  - ☐ Rectangle - Size:\_\_\_\_\_
  - ☐ Flanged

### MATERIAL OPTIONS

- ☐ 316 Stainless Steel

### FINISH OPTIONS

- ☐ Polished
- ☐ White Antimicrobial Powder Coat
- ☐ Other: \_\_\_\_\_

### FACE OPTIONS

- ☐ Perf Face
- ☐ CLCD Face
- ☐ Swirl Face

### PERF OPTIONS

- ☐ 13% - Standard
- ☐ 23% - Medium
- ☐ 33% - High
- ☐ 51% - Max

### FILTER OPTIONS

- ☐ ULPA Filter - 99.9995% on 0.12 µm

FILTER	NOMINAL UNIT SIZE	OVERALL WIDTH (W)	OVERALL HEIGHT (H)	DEPTH (D)	CUTOUT WIDTH (CW)	CUTOUT HEIGHT (CH)	ACTIVE FILTER FACE AREA (SQ.FT.)
RSR	24 X 24	23.75	23.75	9.00	23.00	23.00	2.00
	36 X 24	35.75	23.75	9.00	35.00	23.00	3.42
	48 X 24	47.75	23.75	9.00	47.00	23.00	4.84

### LIGHTING OPTIONS *(See Page 3 of 3 for Additional Details)*

- ☐ Color: White; Preset at 5000K; 90+ CRI
- ☐ Color: White; Preset; 90+ CRI
  - ☐ 2700
  - ☐ 3000
  - ☐ 3500
  - ☐ 4000
  - ☐ 4500
  - ☐ 5000
  - ☐ 6500
- ☐ Color: Tunable from 2700K-6500K via 0-10VDC Dimmer; 90+ CRI
- ☐ Other Color:\_\_\_\_\_
- ☐ Battery Backup
  - 20% of Light Output for up to 90 Minutes

### DAMPER TYPE

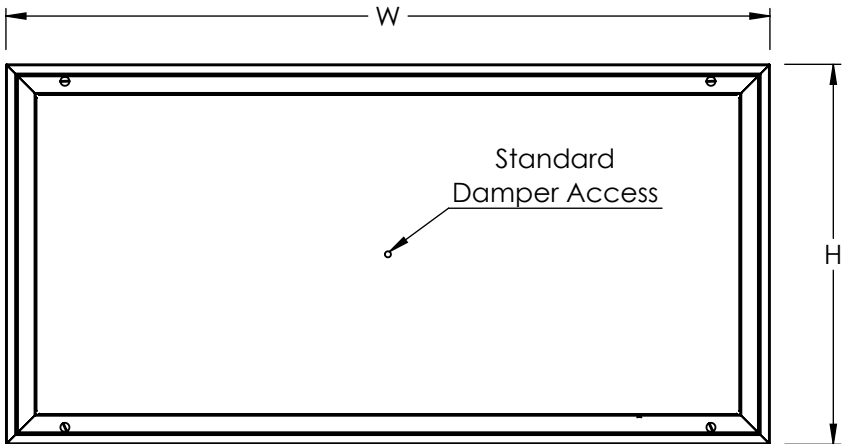
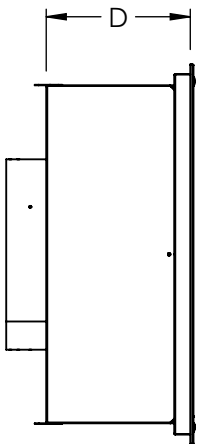
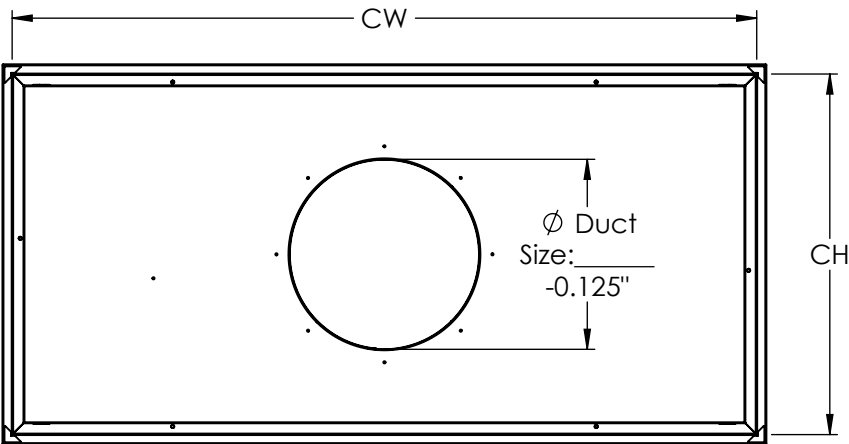
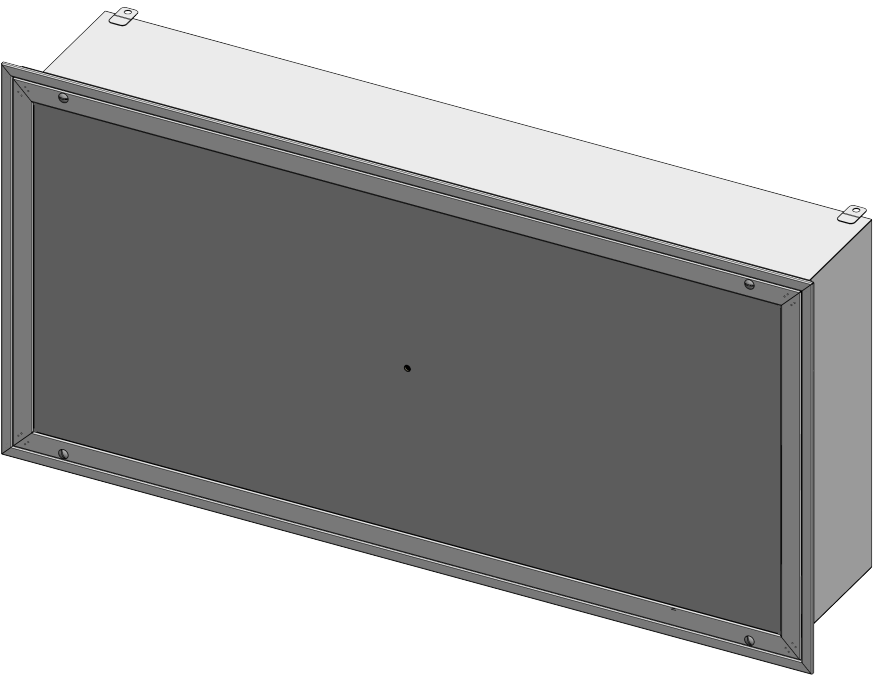
- ☐ SSRD - Butterfly Damper
- ☐ SSBD - Bowtie Damper
- ☐ SSDD - Disc Damper
  - ☐ Solid Disc
  - ☐ Solid Disc w/Perf Ring
  - ☐ Perf Disc
- ☐ SSSD - Slide Damper

### DAMPER OPTIONS

- ☐ Remote Damper *(Not Available w/Disc Damper)*



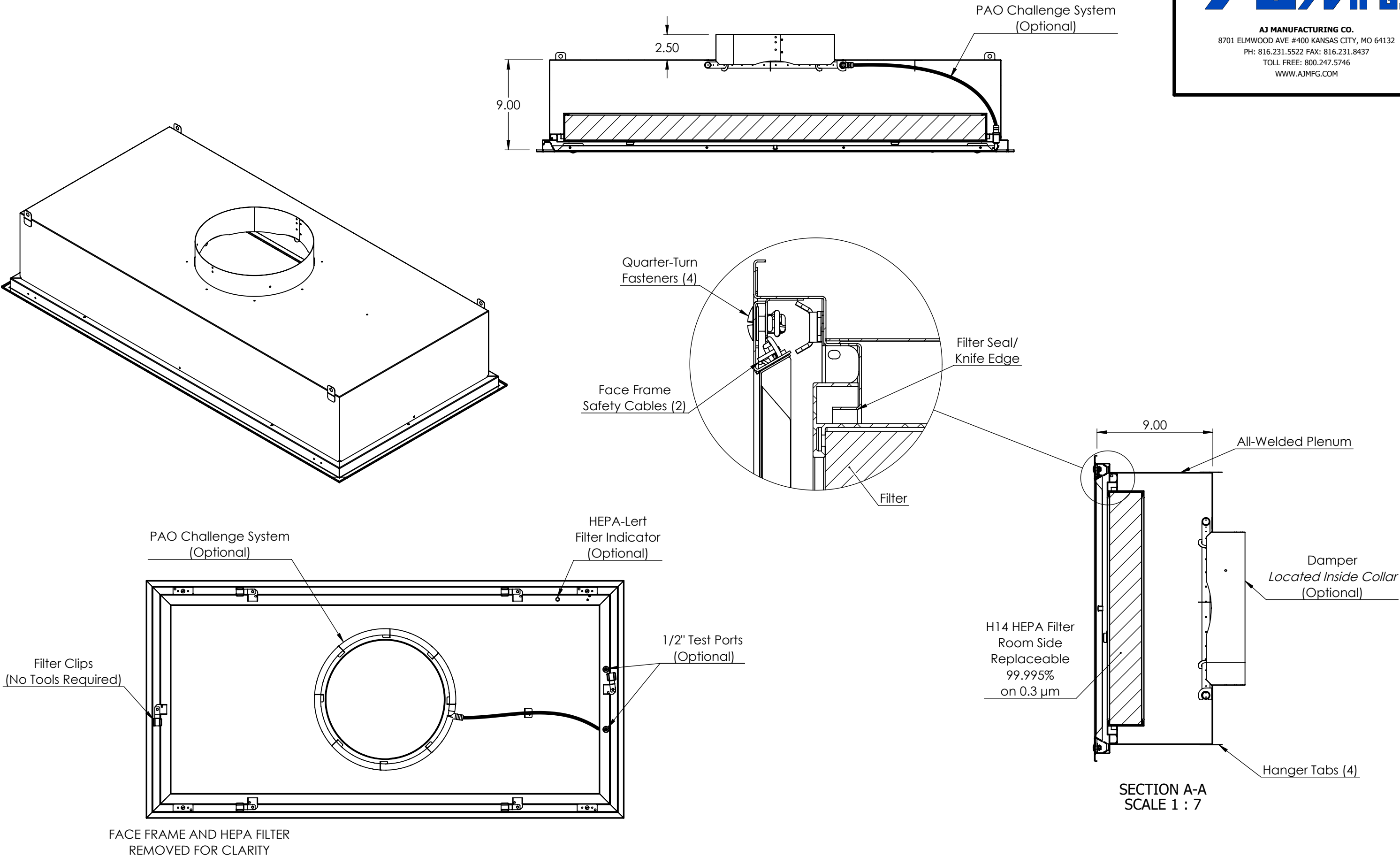
AJ MANUFACTURING CO.  
8701 ELMWOOD AVE #400 KANSAS CITY, MO 64132  
PH: 816.231.5522 FAX: 816.231.8437  
TOLL FREE: 800.247.5746  
WWW.AJMFG.COM



SSLFHFD  
LAMINAR FLOW HEPA FILTER DIFFUSER



AJ MANUFACTURING CO.  
8701 ELMWOOD AVE #400 KANSAS CITY, MO 64132  
PH: 816.231.5522 FAX: 816.231.8437  
TOLL FREE: 800.247.5746  
WWW.AJMFG.COM



# SSLFHFD-LED

## LAMINAR FLOW HEPA FILTER DIFFUSER W/LED LIGHTING

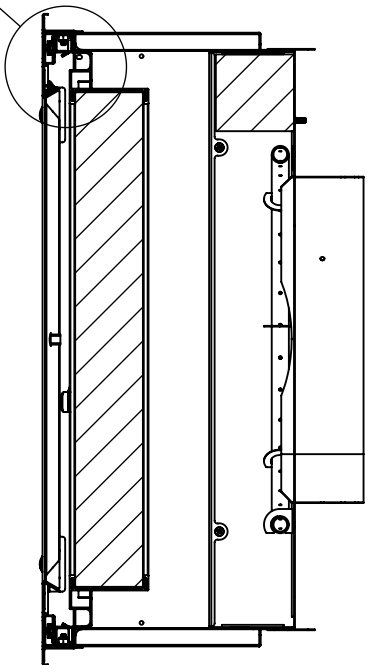
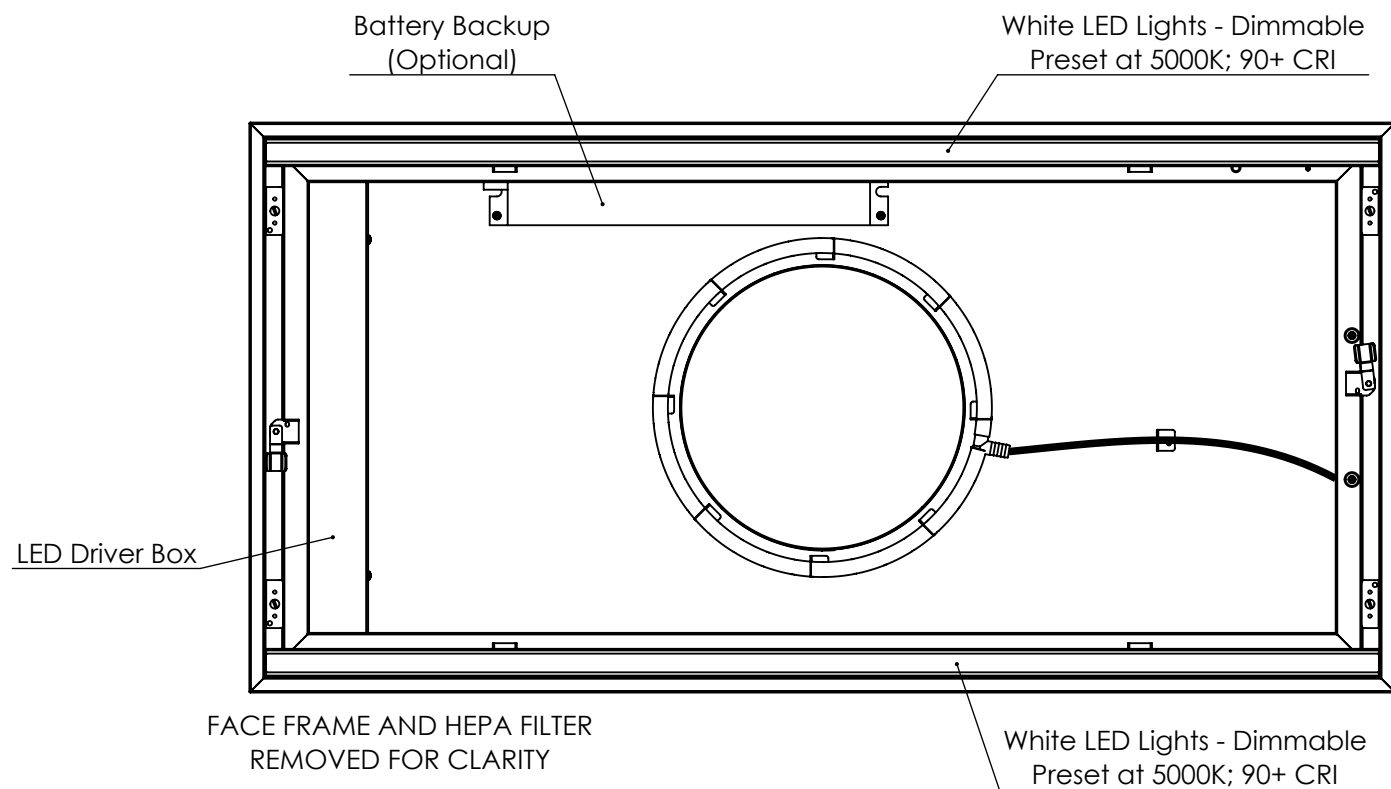
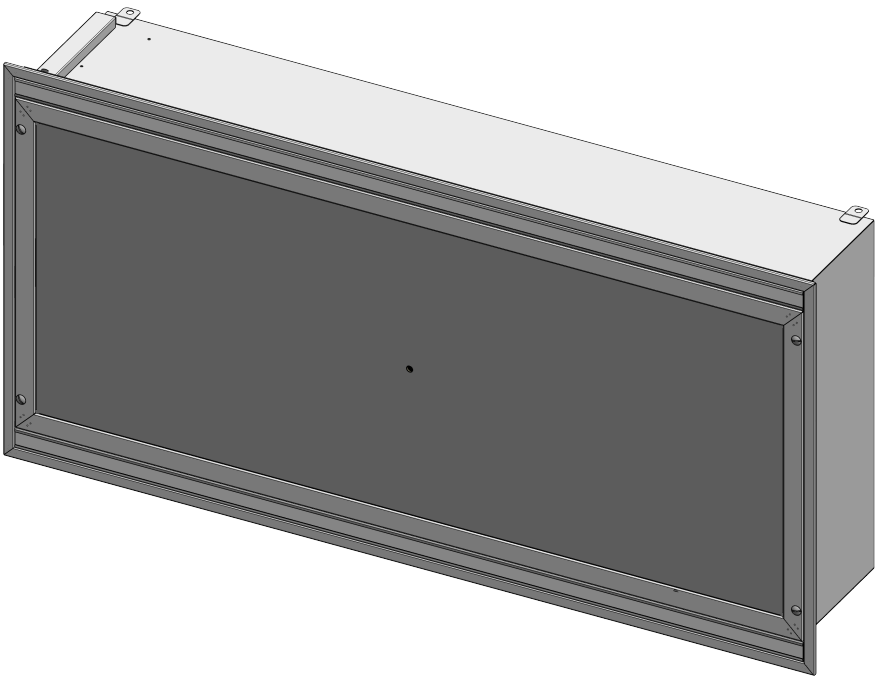
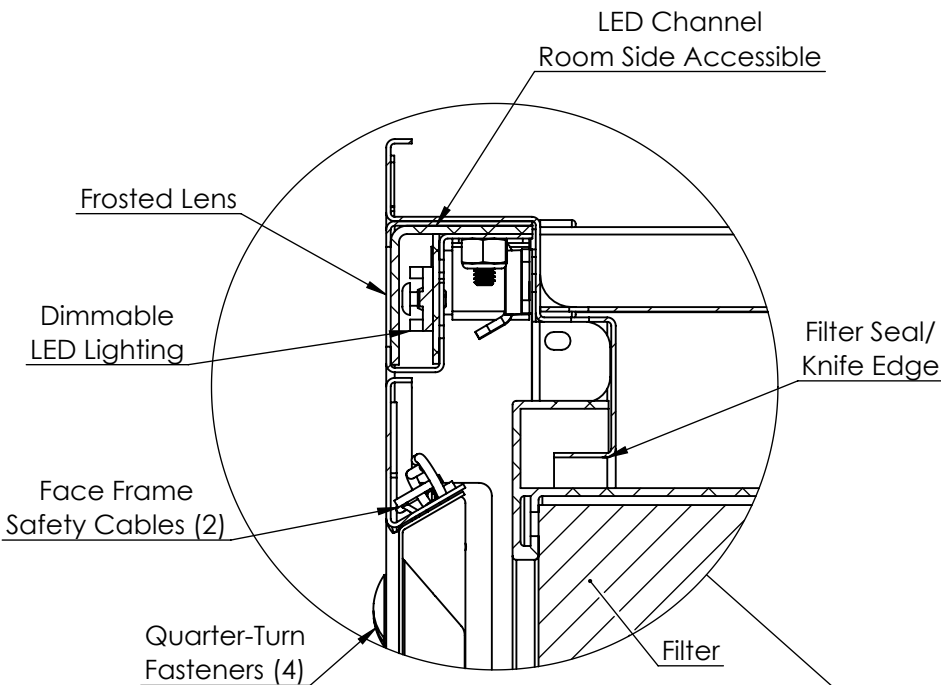


### MEETS THE FOLLOWING UL LISTINGS

- UL 1598 - Standard for Safety Luminaires
- UL 2043 - Standard for Safety Fire Test
- UL 2108 - Standard for Low Voltage Lighting Systems
- UL 8750 - Standard for Light Emitting Diode (LED) Equipment for Use in Lighting Products
- UL 1310 - Standard for Class 2 Power Units
- UL 94 - Standard for Tests for Flammability of Plastic Materials for Parts in Devices and Appliances

### LIGHTING SPECIFICATIONS

- Color: White; Preset at 5000K; 90+ CRI
- Dimmable LEDs Controlled via 0-10VDC Dimmer
- Driver - 100watt - Class 2 - 100-277VAC Input
- 120VAC = 1.05Amps per Driver **or**
- 230VAC = 0.58Amps per Driver **or**
- 277VAC = 0.48Amps per Driver



SECTION B-B  
SCALE 1 : 7



AJ MANUFACTURING CO.  
8701 ELMWOOD AVE #400 KANSAS CITY, MO 64132  
PH: 816.231.5522 FAX: 816.231.8437  
TOLL FREE: 800.247.5746  
WWW.AJMFG.COM